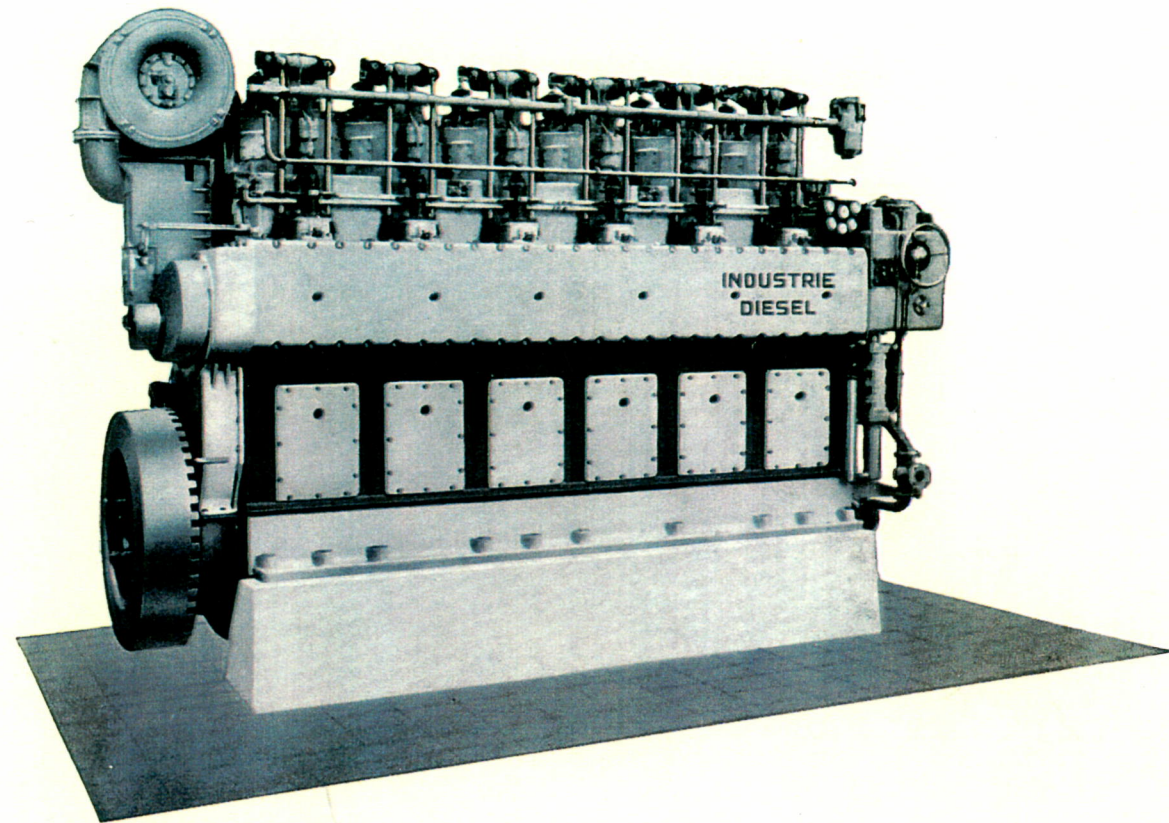


INDUSTRIE DIESEL ENGINES

A.I. = AN INDUSTRIE



INDUSTRIE type D8

Fourstroke	direct reversing
simple	6 and 8 cylinders
reliable	continuous output 142 BHP/cyl.
economical	supercharged 225 BHP/cyl.
overloading permitted	at 300 rpm

Our sturdy design makes the Industrie diesel engine the outstanding engine for heavy duties, e.g. propulsion of sea-going vessels, tugs, pumping stations, generatingsets etc.

Bosch fuel pumps and nozzles, lubricating oil strainer, duplex fuel oil filter, closed cooling water circuit with thermostat, cooling water pump, cooling water filter, water cooled exhaust manifold, starting air compressor, airvessels, air-starter on each cylinder, spares and tools, automatic reversing, tachometer, exhaust silencer, governor, thermometers on waterdrain and exhaust manifold of each cylinder cover.

When needed: reduction-gear can be fitted.

Motorenfabriek **DE INDUSTRIE**

D. en Joh. Boot N.V.

ALPHEN a/d RIJN - HOLLAND - Telefoon (01720) 36 91

Technical data of the Industrie diesel engines type D8

Engine type

	6 D8	6 D8HD	8 D8	8 D8HD
Number of cylinders	6	6	8	8
B.H.P.	850	1350	1150	1800
Length engine L	5457	5457	6777	6777
Nett weight engine without flywheel	38600	38600	48500	48500
Nett weight flywheel	2400	2400	2400	2400
Gross weight engine without flywheel	42500	42500	53500	53500
Space of engine case	45.5	45.5	56.5	56.5

In all executions:

speed	300 rpm
bore	400 mm
stroke	600 mm
lube oil consumption	1 g/BHP.h
fuel oil consumption	162 g/BHP.h
fuel oil consumption	156 g/BHP.h supercharged

Pipe dimensions:

starting air	50 mm
cooling water	83 mm
fuel oil	27 mm
lube oil	63 mm

Weights and measures not binding.

Scale 1 : 50

